

Emmaus



2008

In 2008 three new Emmaus Communities opened their doors.

In February Emmaus Sheffield welcomed their first Companions. Then in August Emmaus Colchester and Emmaus Preston opened.

In Spring 2009 two more Emmaus Communities are opening in Oxford and Winchester.

Emmaus is committed to meeting the need of homeless men and women across the UK, which is why there are a further 12 Emmaus Groups working to establish Communities, and other emerging Groups still at an early stage of development.

Emmaus
48 Kingston St
Cambridge
CB1 2NU
T 01223 576103
F 01223 576203
contact@emmaus.org.uk
www.emmaus.org.uk

The homeless charity that works

Emmaus in the UK

- Emmaus Community
- Affiliated Emmaus Group



Emmaus Communities

Emmaus Bolton
Emmaus Brighton & Hove
Emmaus Bristol
Emmaus Cambridge
Emmaus Colchester
Emmaus Coventry & Warwickshire
Emmaus Glasgow
Emmaus Gloucestershire
Emmaus Greenwich
Emmaus Hampshire (opening Spring 09)
Emmaus Leeds
Emmaus Mossley
Emmaus Oxford (opening Spring 09)
Emmaus Preston
Emmaus Sheffield
Emmaus South Lambeth
Emmaus St Albans
Emmaus Village Carlton
St Martin's Emmaus (Dover)

Emmaus Affiliated Groups

Emmaus Burnley
Emmaus Exeter
Emmaus Gateshead
Emmaus Ipswich
Emmaus Hastings & Rother
Emmaus Hull
Emmaus Liverpool
Emmaus Medway
Emmaus Norwich (affiliated Spring 09)
Emmaus Rugby
Emmaus Salford
Emmaus South Wales

2008

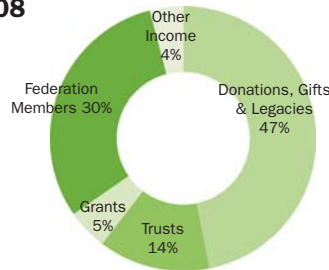
in
figures

Copies of the full statutory accounts can be downloaded from www.emmaus.org.uk or you can request a copy from the Federation Office.

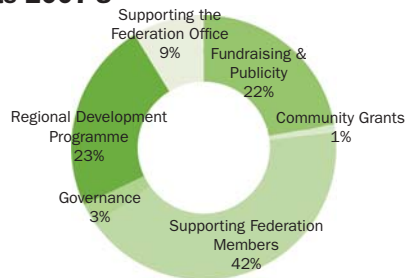
Emmaus UK financial information for 2008

Income	Federation Office			Federation Members	
	Unrestricted	Restricted	Total	Restricted	Total
Donations, gifts & legacies	1,246,392	8,326	1,254,718	23,576	1,278,294
Trusts	158,658	205,430	364,088	131,425	495,513
Grants	0	0	0	59,821	59,821
Statutory	0	131,221	131,221	603,500	734,721
Other Income	108,904	647	109,551	0	109,551
Total Income	1,513,954	345,624	1,859,578	818,322	2,677,900

Income 2008



Staff costs 2007-8



In 2008...

- the number of places for Companions increased by 14% from 267 to 305
- Emmaus Communities received more than 1,000 applications for places, of which 40% had to be refused due to lack of space
- Federation Trading Income exceeded £2.5m, an increase of 9% from 2007
- more than 250 volunteers regularly helped Emmaus projects, giving more than 32,000 hours of their time

Emmaus Annual Review 2008



emmaus

This year we have chosen to produce a very simple annual review, focusing on the way in which Emmaus transforms people's lives and gives them hope again.

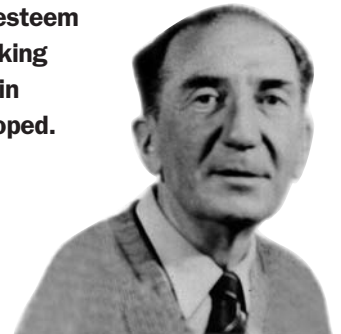
The Emmaus Movement began one night when Abbé Pierre met a man called Georges...

The homeless charity that works

Georges was a man who felt he had no future. Released from prison, after serving a 20 year sentence, and rejected by his family, he had nowhere to go. In utter despair, he tried to commit suicide in the Seine but he was rescued and taken to Abbé Pierre, a French Roman Catholic priest who was working to help the many destitute people on the streets of Paris after the war.

Abbé Pierre did not offer Georges sympathy. Instead he asked for his help. 'If you are really determined to kill yourself, I can't stop you. But before you do, think of the homeless mothers who come to me in tears because of the conditions in which their children have to live. If I am to help them, I can't do it on my own.'

And so the fundamental Emmaus ethos of rebuilding self-esteem and dignity through working together to help others in greater need was developed.



A home, a job, a purpose:
Emmaus helps individuals build new lives.

Some highlights of the year



January

Selwyn Image, Emmaus Vice-President and the man who brought Emmaus to the UK, is awarded a CBE in the New Year's Honours List.



February

Emmaus Sheffield opened its doors to its first Companions. A Companion from Emmaus Greenwich joined the staff team.



March

Building work started at Emmaus Hampshire – a 'green' building complete with sedum roof.



Terry Waite, President of Emmaus UK, was on hand when building work also started at Emmaus Oxford.



The Group working to establish an Emmaus Community in Burnley were awarded £1million by the Department for Communities and Local Government.

April

Joanna Lumley officially opened Emmaus South Lambeth.



Emmaus Leeds Companion, Clayton, completed the London marathon to raise money for Emmaus.

At 26, Lee was deputy manager of a restaurant and hotel. Then his girlfriend left him and he lost the tenancy on his flat.

My GP signed me off work and advised me to resign from my job, which I did. I was effectively homeless, and was spending a few nights here and there on friends' sofas.

Then I joined Emmaus Sheffield. As well as working in the Emmaus shop, selling second-hand furniture and other household goods, I work for a housing association, cleaning properties for families to move into. Emmaus also helps people get back into work and training. I'm currently studying horticulture at college and for a certificate in higher education in supported housing and community care at Sheffield Hallam University.

Working at Emmaus is very rewarding. I've no idea what the future holds. What I do know is that I want to work with the homeless or in housing. I've had a difficult few years, but I finally feel settled.

Everyone in an
Emmaus
Community has
a role to fill and
contributes to
the well-being of
the Community.



May

Emmaus Brighton launched the Good Will Co-op – a project to involve local people using recycled craft materials to make goods to sell in aid of Emmaus.



June

Emmaus Greenwich opened a second shop on Lewisham High Street, with the local Mayor and Terry Waite, Emmaus UK President, in attendance.



Former super model and Emmaus Ambassador, Jerry Hall, auctioned some of her dresses in aid of Emmaus, raising over £20,000.



July

Two Companions from Emmaus Village Carlton completed a pilot supported work experience placement with Tesco.



August

Two Companions from UK Emmaus Communities travelled to Finland to take part in the Emmaus International summer camp.



Emmaus Preston welcomed its first Companions - becoming the 17th Emmaus Community in the UK.

Tookey was a successful publican until a bad motorbike accident left him in a coma for two and a half months.

I lost a rib and a half, had my spleen taken out, punctured my lung, lost thirty five pints of blood and was in hospital for ten months. When I came out of hospital there wasn't any support at all. I had no money and nowhere to stay. I ended up on the streets. I slept rough all over the place, in many different cities.

Emmaus has given me back some responsibility. I work in the workshop and on the vans. I want to get a job and my own place. Being here has made me realise that I have to do something for myself if I want my life to change.



Through their business activities Emmaus Communities aim to become self-sufficient. Any surplus is used to help those in greater need.



emmaus



September

A Wellington Secretor, donated to Emmaus St Albans, raised £1100 at auction.



October

Emmaus Colchester held their official opening, after taking their first Companions in August.



Homeware retailer HomeSense chose Emmaus as its charity of the year, with support including the sale of 'bags for life' in aid of Emmaus.

November

Comedian Harry Enfield spoke at an event to launch 'Sharing in Success', a report by Cambridge University that reveals that an Emmaus Community can save the taxpayer more than £800,000 a year.



December

Antonio Carluccio spent a day at Emmaus South Lambeth cooking with Companions.



Her Royal Highness, The Duchess of Cornwall, visited Emmaus Gloucestershire's shop in Nailsworth, in her role as Royal Patron of Emmaus UK.

Graham used to work as a security guard on a building site. After his mother died he became severely depressed and lost his job.

After losing my job I couldn't afford to pay the mortgage and I became homeless. I stayed with my father and sister and then in a night shelter in Colchester. It was around then when I heard about Emmaus.

I've been at Emmaus for about two years. I went on a carpentry course for eight months and now I refurbish donated goods, creating something new from a mixture of broken parts. I've made a coat umbrella from old lamp stands and a shelf unit out of a bunk bed!

Whereas the night shelter was run like a business, there is a family atmosphere at Emmaus which has given me a real sense of belonging. Now that my depression is under control, I feel a lot more hopeful about the future. I've got a lot to thank Emmaus for and I'd like to feel I'm giving something back.

The homeless charity that works